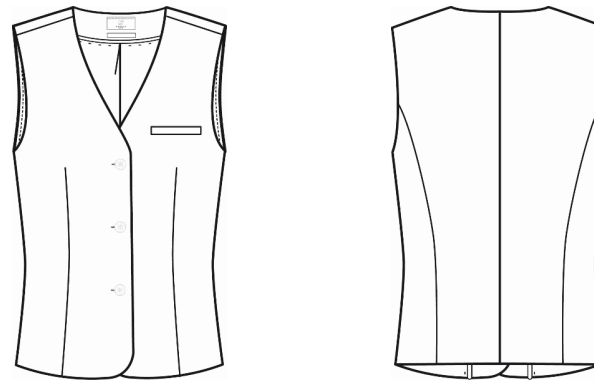


# PREMIUM Comfort Fit



## STYLE 1720



### DEUTSCH

#### Damen-Weste CF Premium

3-Knopf  
1 Brustleistentasche  
1 Innentasche  
Stoffrücken  
Rücklänge 57 cm | Gr. 46

### ENGLISH

#### L waistcoat CF Premium

3-button  
1 breast welt pocket  
1 inside pocket  
fabric back  
back length 57 cm | size 46

### FRANCAIS

#### Gilet F CF Premium

3 boutons  
1 poche poitrine  
1 poche intérieure  
dos tissu  
longueur dos 57 cm | taille 46

### NEDERLANDS

#### D gilet CF Premium

3 knoops  
1 borstzak met paspel  
1 binnenzak  
stoffen rug  
ruglengte 57 cm | maat 46

NR: 1720.666.110 schwarz  
NR: 1720.666.111 anthrazit  
NR: 1720.666.120 marine

NO: 1720.666.110 black  
NO: 1720.666.111 anthracite  
NO: 1720.666.120 navy blue

RÉF: 1720.666.110 noir  
RÉF: 1720.666.111 anthracite  
RÉF: 1720.666.120 bleu marine

NR: 1720.666.110 zwart  
NR: 1720.666.111 antraciet  
NR: 1720.666.120 marine

**GRÖSSEN:** 46 - 60  
**GEWEBE:** 60 % Schurwolle 200 g/m<sup>2</sup>  
36 % Polyester  
4 % Elasthan

**SIZES:** 46 - 60  
**FABRIC:** 60 % virgin wool 200 g/m<sup>2</sup>  
36 % polyester  
4 % elastane

**TAILLES:** 46 - 60  
**TEXTILE:** 60 % laine vierge 200 g/m<sup>2</sup>  
36 % polyester  
4 % élasthanne

**MAAT:** 46 - 60  
**DOEK:** 60 % scheerwol 200 g/m<sup>2</sup>  
36 % polyester  
4 % elastaan

**FUTTER:** 100 % Polyester

**LINING:** 100 % polyester

**DOUBLURE:** 100 % polyester

**BINNENVOERING:** 100 % polyester

**PFLEGE:**

**CARE:**

**ENTRETIEN:**

**ONDERHOUD:**



Bi-Stretch

Water & Dirt  
Repellent

Machine  
Washable



Bi-Stretch

Water & Dirt  
Repellent

Machine  
Washable



Bi-Stretch

Water & Dirt  
Repellent

Machine  
Washable



Bi-Stretch

Water & Dirt  
Repellent

Machine  
Washable